

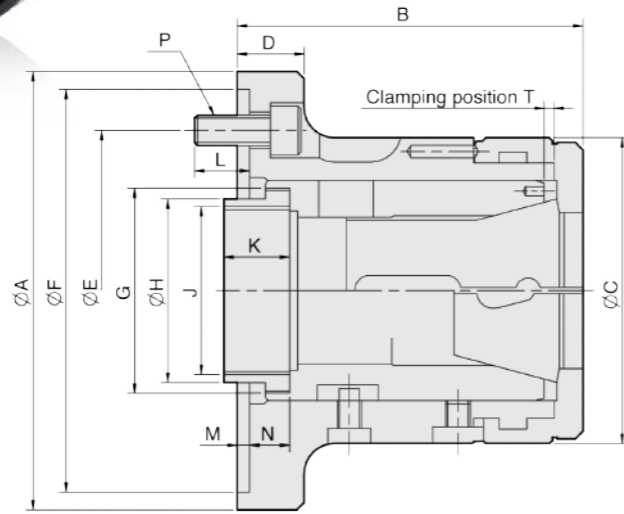
CR

Collet chuck for cylindrical center mount

1. Collet chucks with bayonet catch are mainly used for chucking bar work on NC / CNC lathes.
2. The bar can be fed in through the chuck.
3. Profiles can also be chucked with the appropriate collets.



Product schematic

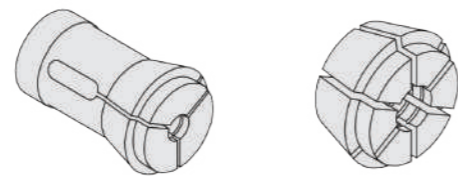


SPEC Model	Matching Adapter	Bar Capacity (mm)	Sleeve Stroke (mm)	Max. Push Force kN(kgf)	Max. Gripping Force kN(kgf)	Max. Speed (r.p.m.)	Weight (kg)
CR42-140	140	42	7	25(2549)	55(5608)	6000	6.2
CR52-170	170	52	7	30(3059)	65(6628)	5000	12.5
CR60-170	170	60	7	30(3059)	65(6628)	5000	11.5
CR60-220	220	60	7	30(3059)	65(6628)	5000	15.5
CR80-220	220	80	7	35(3568)	73(7443)	4000	19.5

DIM Model	A (h6)	B	C	D	E	F (H6)	G	H	J max.	K	L	M	N	P	T
CR42-140	155	114	100	23	104.78	140	M66xP1.5	60	M55xP2.0	25	18	6	11.9	3-M10	3.1
CR52-170	185	138	130	30	133.35	170	M90xP1.5	66.7	M60xP2.0	30	18	6	17.9	6-M12	3.1
CR60-170	185	139	130	30	133.35	170	M90xP1.5	80	M74xP2.0	30	18	6	17.9	6-M12	3.1
CR60-220	235	141	130	32	171.45	220	M90xP1.5	80	M74xP2.0	30	20	6	19.9	6-M16	3.1
CR80-220	235	167	156	32	171.45	220	M114xP2.0	99	M90xP2.0	27.5	20	6	23.4	6-M16	6.1

Capacities Chuck	MULTIBORE	SPRING COLLET
NO.	Cat.No. / O / O / O / □	Cat.No. / O / O / □
CR42	M-673 / 42 / 36 / 30	173E/4728 / 42 / 36 / 30
CR52	- / - / - / -	177E / 52 / 45 / 36
CR60	M-677 / 60 / 52 / 42	185E/4291 / 60 / 52 / 42
CR80	J-660 / 80 / 69 / 56	193E/H-47 / 80 / 69 / 56

Collet Drawings



- Spring Collet - - Multi-Bore Collet -

*Uses the collet to DIN6343 specification.

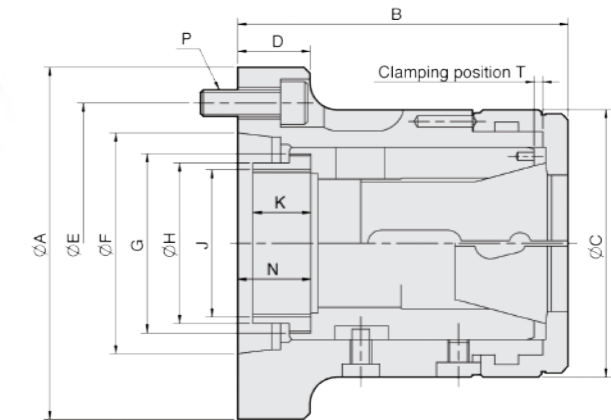
CRA

Collet chuck for short taper mount

1. Collet chucks with bayonet catch are mainly used for chucking bar work on NC / CNC lathes.
2. The bar can be fed in through the chuck.
3. Profiles can also be chucked with the appropriate collets.



Product schematic

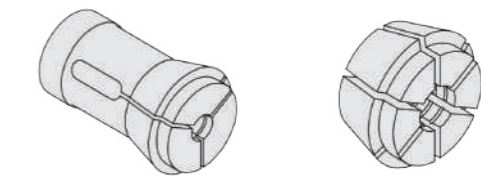


SPEC Model	Matching Spindle	Bar Capacity (mm)	Sleeve Stroke (mm)	Max. Push Force kN(kgf)	Max. Gripping Force kN(kgf)	Max. Speed (r.p.m.)	Weight (kg)
CR26A4	A2-4	26	5	20(2039)	44(4486)	7000	4.5
CR30A4	A2-4	30	5	20(2039)	44(4486)	7000	4.1
CR42A5	A2-5	42	7	25(2549)	55(5608)	6000	6.2
CR42A6	A2-6	42	7	25(2549)	55(5608)	6000	8.2
CR52A6	A2-6	52	7	30(3059)	65(6628)	5000	12.2
CR60A6	A2-6	60	7	30(3059)	65(6628)	5000	13
CR80A8	A2-8	80	7	35(3568)	73(7443)	4000	21

DIM Model	A	B	C	D	E	F	G	H	J max.	K	N	P	T
CR26A4	112	103.5	85	30	82.55	63.513	M50xP1.5	45	M40xP1.5	15	21.7	3-M10	2.3
CR30A4	112	103.5	85	30	82.55	63.513	M50xP1.5	45	M40xP1.5	15	21.7	3-M10	2.3
CR42A5	135	127	100	27	104.78	82.563	M66xP1.5	60	M55xP2.0	25	30.9	4-M10	3.1
CR42A6	170	127	100	32	133.35	106.375	M66xP1.5	66	M60xP2.0	22	30.9	4-M12	3.1
CR52A6	170	144	130	27	133.35	106.375	M90xP1.5	66.7	M60xP2.0	30	29.9	4-M12	3.1
CR60A6	170	145	130	27	133.35	106.375	M90xP1.5	80	M74xP2.0	30	29.9	4-M12	3.1
CR80A8	220	170	156	35	171.45	139.719	M114xP2.0	99	M90xP2.0	27.5	32.4	6-M16	6.1

Capacities Chuck	MULTIBORE	SPRING COLLET
NO.	Cat.No. / O / O / O / □	Cat.No. / O / O / □
CR26	M-667 / 26 / 22 / 18	161E/8744 / 26 / 22 / 18
CR30	M-669 / 30 / 26 / 21	163E/4249 / 30 / 26 / 21
CR42	M-673 / 42 / 36 / 30	173E/4728 / 42 / 36 / 30
CR52	- / - / - / -	177E / 52 / 45 / 36
CR60	M-677 / 60 / 52 / 42	185E/4291 / 60 / 52 / 42
CR80	J-660 / 80 / 69 / 56	193E/H-47 / 80 / 69 / 56

Collet Drawings



- Spring Collet - - Multi-Bore Collet -

*Uses the collet to DIN6343 specification.