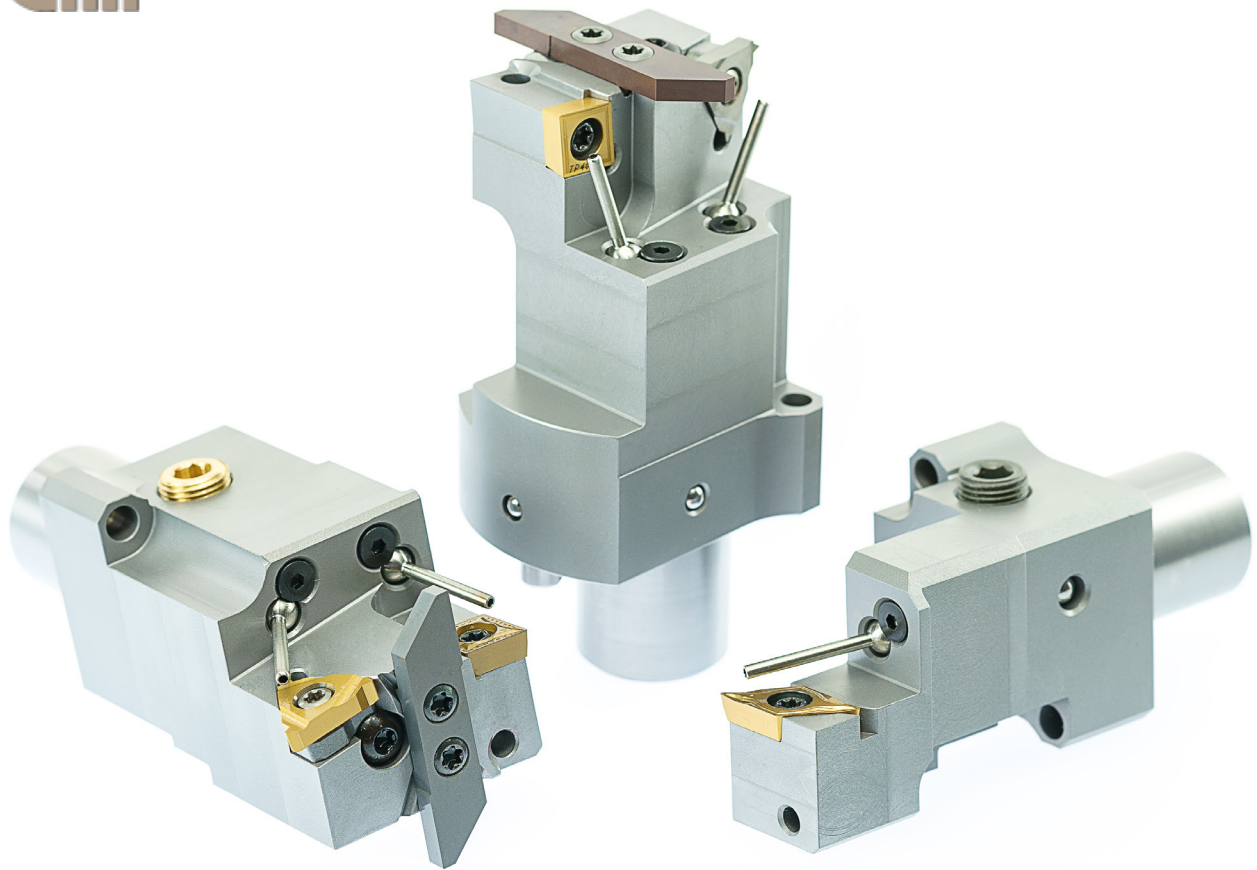


stair



f. britsch

alles. immer. schnell.

RÜCKSEITENBEARBEITUNG BACKWORKING TOOLHOLDER

IHR BEDARF – UNSERE LEIDENSCHAFT

BEI UNS BEKOMMEN SIE ALLES, WAS SIE
ZUM DREHEN BRAUCHEN

YOUR NEEDS – OUR PASSION

WITH US YOU GET ALL THE TOOLS THAT YOU
NEED FOR THE TURNED PARTS INDUSTRY

Wendeplattenhalter SCLCR/L09 für Rückseitenbearbeitung mit AK (Kühlung)

Insert Holder SCLCR/L09 for Backworking with AK (coolant)

Bestell-Nr.: order-no.:	WP-SCLCR09SW WP-SCLCL09SW	rechte - right linke - left	Ausführung - version	für - for	SW12RII; SB12/20R; SW20; SV20R; SR20RIV; SR38
Platte: Insert:	CC..09T3	Schraube: Screw:	A02-40105	Schlüssel: Wrench:	T15

Wendeplattenhalter SCLCR/L09 für Rückseitenbearbeitung mit IK (Kühlung)

Insert Holder SCLCR/L09 for Backworking with IK (coolant)

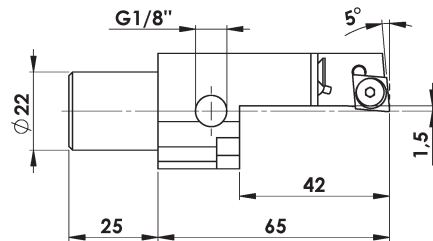
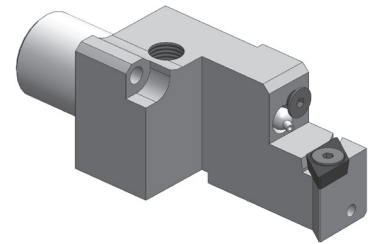
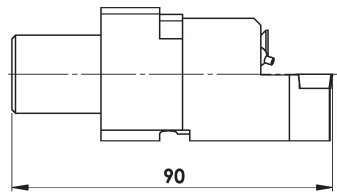
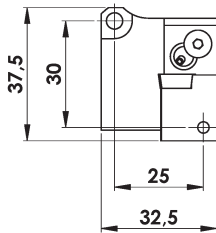
Bestell-Nr.: order-no.:	WP-SCLCR09SWIK WP-SCLCL09SWIK	rechte - right linke - left	Ausführung - version	für - for	SR38; SR32JII
Platte: Insert:	CC..09T3	Schraube: Screw:	A02-40105	Schlüssel: Wrench:	T15

Wendepplattenhalter SDUCR/L11
für Rückseitenbearbeitung mit AK (Kühlung)

Insert Holder SDUCR/L11
for Backworking with AK (coolant)

Bestell-Nr.: order-no.:	WP-SDUCR11SW WP-SDUCL11SW	rechte - right linke - left	Ausführung - version	für - for	SW12RII; SB12/20R; SW20; SV20R; SR20RIV; SR38
----------------------------	------------------------------	--------------------------------	----------------------	-----------	--

Platte: Insert:	DC..11T3	Schraube: Screw:	A02-40105	Schlüssel: Wrench:	T15
--------------------	----------	---------------------	-----------	-----------------------	-----

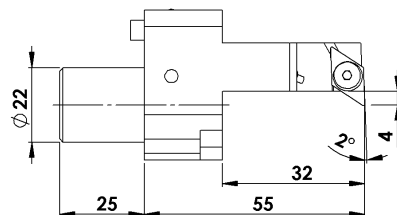
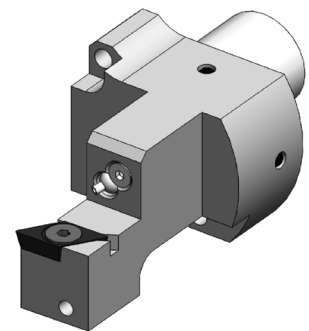
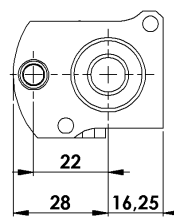
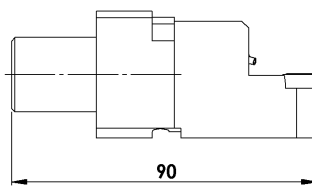
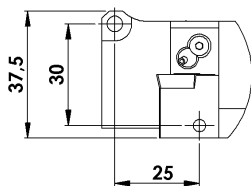


Wendepplattenhalter SDUCR/L11
für Rückseitenbearbeitung mit IK (Kühlung)

Insert Holder SDUCR/L11
for Backworking with IK (coolant)

Bestell-Nr.: order-no.:	WP-SDUCR11SWIK WP-SDUCL11SWIK	rechte - right linke - left	Ausführung - version	für - for	SR38; SR32JII
----------------------------	----------------------------------	--------------------------------	----------------------	-----------	---------------

Platte: Insert:	DC..11T3	Schraube: Screw:	A02-40105	Schlüssel: Wrench:	T15
--------------------	----------	---------------------	-----------	-----------------------	-----



Wendeplattenhalter SVUBR16
für Rückseitenbearbeitung mit AK (Kühlung)Insert Holder SVUBR16
for Backworking with AK (coolant)

Bestell-Nr.: order-no.:	WP-SVUBR16SW VB..1604	(rechte Ausführung) (right version)	für - for	SW12RII; SB12/20R; SW20; SV20R; SR20RIV; SR38
Platte: Insert:	VB..1604	Schraube: Screw:	A02-40108	Schlüssel: Wrench:
				T15

Wendeplattenhalter SVUBR16
für Rückseitenbearbeitung mit IK (Kühlung)Insert Holder SVUBR16
for Backworking with IK (coolant)

Bestell-Nr.: order-no.:	WP-SVUBR16SWIK VB..1604	(rechte Ausführung) (right version)	für - for	SR38; SR32JII
Platte: Insert:	VB..1604	Schraube: Screw:	A02-40108	Schlüssel: Wrench:
				T15

Wendepplattenhalter SVUCR11
für Rückseitenbearbeitung mit AK (Kühlung)

Insert Holder SVUCR11
for Backworking with AK (coolant)

Bestell-Nr.: <i>order-no.:</i>	WP-SVUCR11SW	(rechte Ausführung) (right version)	für - for	SW12RII; SB12/20R; SW20; SV20R; SR20RIV; SR38
Platte: <i>Insert:</i>	VC..1103	Schraube: <i>Screw:</i>	A02-25060	Schlüssel: <i>Wrench:</i> T8

Wendepplattenhalter SVUCR11
für Rückseitenbearbeitung mit IK (Kühlung)

Insert Holder SVUCR11
for Backworking with IK (coolant)

Bestell-Nr.: <i>order-no.:</i>	WP-SVUCR11SWIK	(rechte Ausführung) (right version)	für - for	SR38; SR32JII
Platte: <i>Insert:</i>	VC..1103	Schraube: <i>Screw:</i>	A02-25060	Schlüssel: <i>Wrench:</i> T8

Wendeplattenhalter SCLCR09 / SDUCL11
für Rückseitenbearbeitung mit AK (Kühlung)Insert Holder SCLCR09 / SDUCL11
for Backworking with AK (coolant)

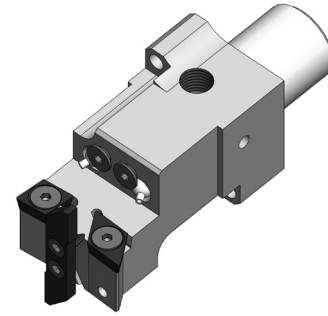
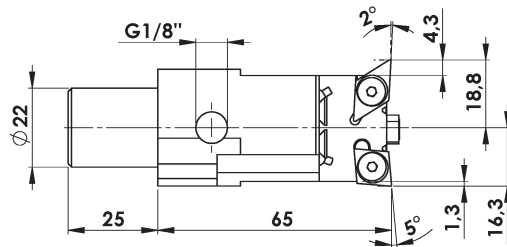
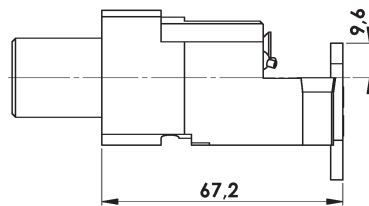
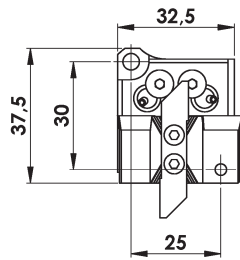
Bestell-Nr.: WP-SCLCR09-SDUCL11-OXOSW (BIMU-Platte - insert)
order-no.: WP-SCLCR09-SDUCL11-ECOSW (APPLITEC-Platte - insert)

für - for SW12RII; SB12/20R; SW20;
SV20R; SR20RIV; SR38

Platte rechts - *insert right*: CC..09T3 - CC..09T3

Platte links - *insert left*: DC..11T3 - DC..11T3

Einstichplatte stirnseitig (optional) - *cut-in insert frontal (optional)*: BIMU OxO-Line oder APPLITEC ECO-Line

Wendeplattenhalter SCLCR09 / SDUCL11
für Rückseitenbearbeitung mit IK (Kühlung)Insert Holder SCLCR09 / SDUCL11
for Backworking with IK (coolant)

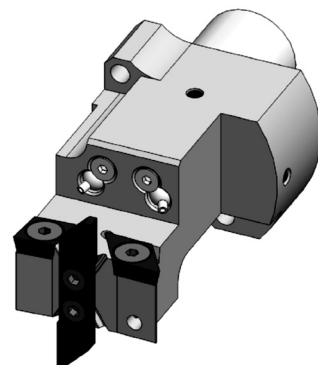
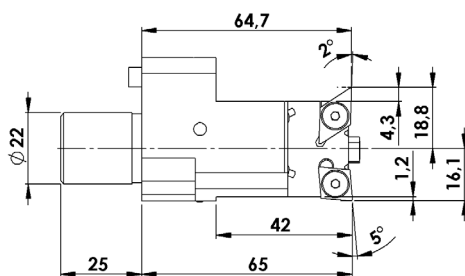
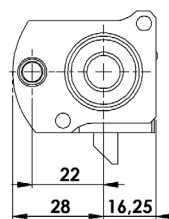
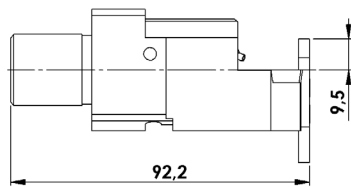
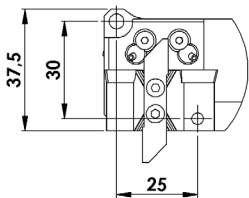
Bestell-Nr.: WP-SCLCR09-SDUCL11-OXOSWIK (BIMU-Platte - insert)
order-no.: WP-SCLCR09-SDUCL11-ECOSWIK (APPLITEC-Platte - insert)

für - for SR38; SR32JII

Platte rechts - *insert right*: CC..09T3 - CC..09T3

Platte links - *insert left*: DC..11T3 - DC..11T3

Einstichplatte stirnseitig (optional) - *cut-in insert frontal (optional)*: BIMU OxO-Line oder APPLITEC ECO-Line



Wendepplattenhalter SCLCR09 / SVUCL11
für Rückseitenbearbeitung mit AK (Kühlung)

Insert Holder SCLCR09 / SVUCL11
for Backworking with AK (coolant)

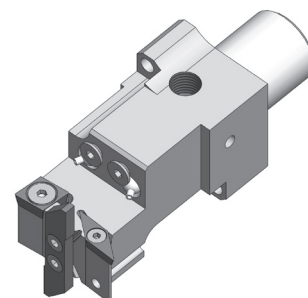
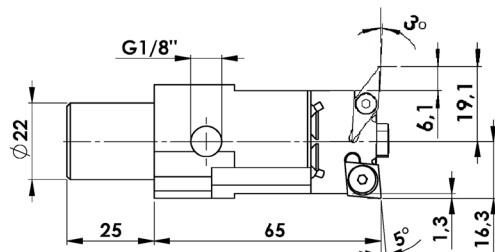
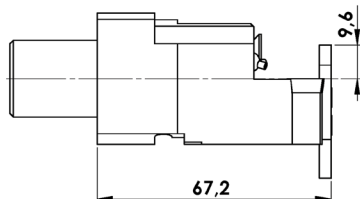
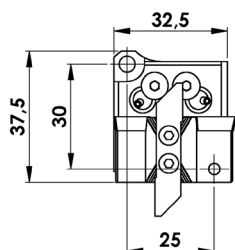
Bestell-Nr.: WP-SCLCR09-SVUCL11-OXOSW (BIMU-Platte - insert)
order-no.: WP-SCLCR09-SVUCL11-ECOSW (APPLITEC-Platte - insert)

für - for SW12R11; SB12/20R; SW20;
SV20R; SR20R1V; SR38

Platte rechts - insert right: CC..09T3 - CC..09T3

Platte links - insert left: VC..1103 - VC..1103

Einstichplatte stirnseitig (optional) - cut-in insert frontal (optional): BIMU OxO-Line oder APPLITEC ECO-Line



Wendepplattenhalter SCLCR09 / SVUCL11
für Rückseitenbearbeitung mit IK (Kühlung)

Insert Holder SCLCR09 / SVUCL11
for Backworking with IK (coolant)

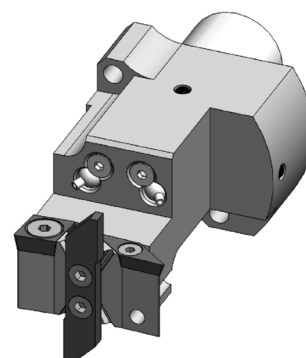
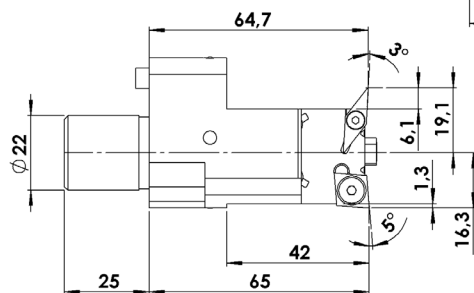
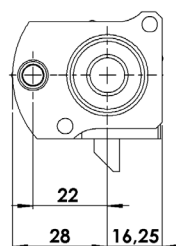
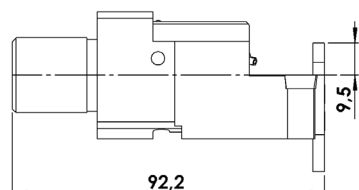
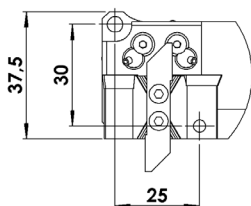
Bestell-Nr.: WP-SCLCR09-SVUCL11-OXOSWIK (BIMU-Platte - insert)
order-no.: WP-SCLCR09-SVUCL11-ECOSWIK (APPLITEC-Platte - insert)

für - for SR38; SR32J11

Platte rechts - insert right: CC..09T3 - CC..09T3

Platte links - insert left: VC..1103 - VC..1103

Einstichplatte stirnseitig (optional) - cut-in insert frontal (optional): BIMU OxO-Line oder APPLITEC ECO-Line



Wendeplattenhalter SVQCR11 / SDUCL11
für Rückseitenbearbeitung mit AK (Kühlung)Insert Holder SVQCR11 / SDUCL11
for Backworking with AK (coolant)

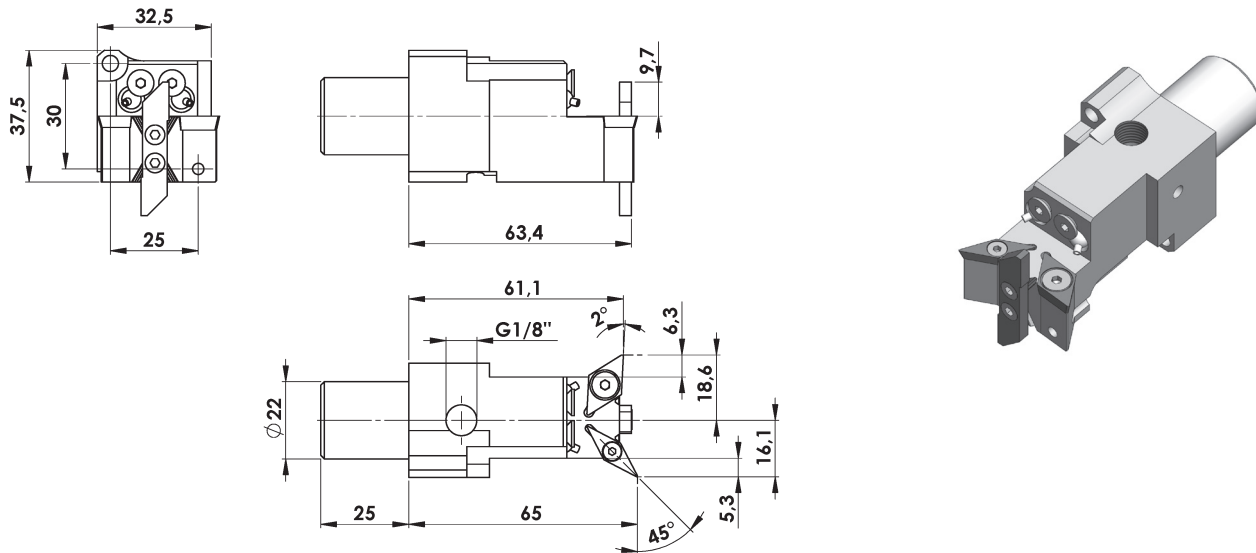
Bestell-Nr.: WP-SVQCR11-SDUCL11-OXOSW (BIMU-Platte - insert)
order-no.: WP-SVQCR11-SDUCL11-ECOSW (APPLITEC-Platte - insert)

für - for SW12RII; SB12/20R; SW20;
SV20R; SR20RIV; SR38

Platte rechts - *Insert right:* VC..1103 - VC..1103

Platte links - *Insert left:* DC..11T3 - DC..11T3

Einstichplatte stirnseitig (optional) - *cut-in insert frontal (optional):* BIMU OxO-Line oder APPLITEC ECO-Line

Wendeplattenhalter SVQCR11 / SDUCL11
für Rückseitenbearbeitung mit IK (Kühlung)Insert Holder SVQCR11 / SDUCL11
for Backworking with IK (coolant)

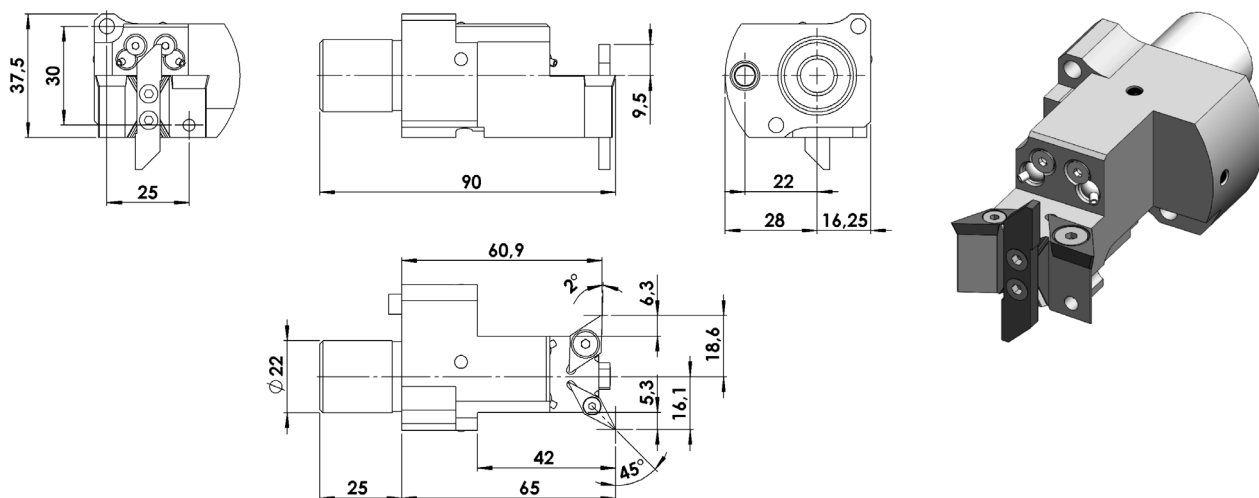
Bestell-Nr.: WP-SVQCR11-SDUCL11-OXOSWIK (BIMU-Platte - insert)
order-no.: WP-SVQCR11-SDUCL11-ECOSWIK (APPLITEC-Platte - insert)

für - for SR38; SR32JII

Platte rechts - *Insert right:* VC..1103 - VC..1103

Platte links - *Insert left:* DC..11T3 - DC..11T3

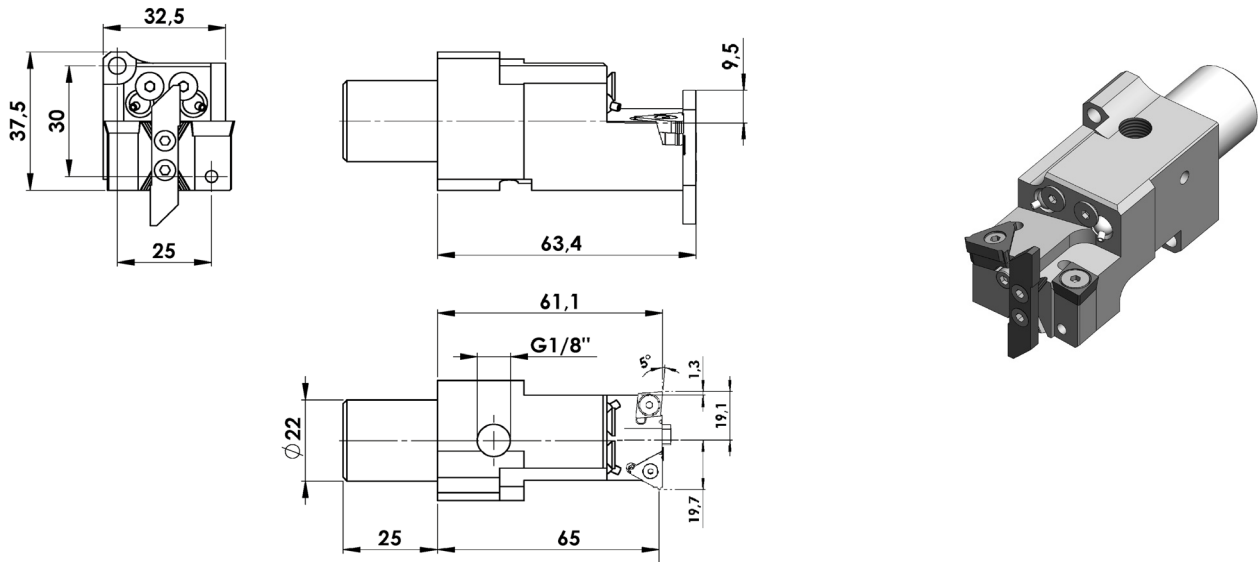
Einstichplatte stirnseitig (optional) - *cut-in insert frontal (optional):* BIMU OxO-Line oder APPLITEC ECO-Line



Wendepplattenhalter ER16 / SCLCL09
für Rückseitenbearbeitung mit AK (Kühlung)

Insert Holder ER16 / SCLCL09
for Backworking with AK (coolant)

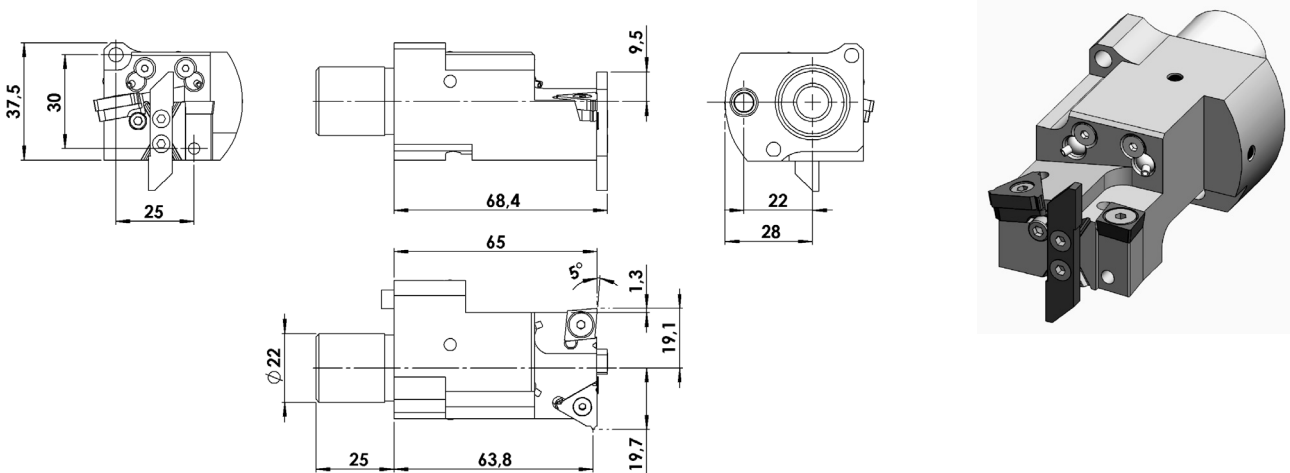
Bestell-Nr.: WP-ER16-SCLCL09-OXOSW	(BIMU-Platte - insert)	für - for	SW12R11; SB12/20R; SW20;
order-no.: WP-ER16-SCLCL09-ECOSW	(APPLITEC-Platte - insert)		SV20R; SR20R1V; SR38
Platte rechts - <i>insert right</i> : Gewindeplatte ER16 - <i>threading insert ER16</i>		Platte links - <i>insert left</i> : CC..09T3 - CC..09T3	
Einstichplatte stirnseitig (optional) - <i>cut-in insert frontal (optional)</i> : BIMU OxO-Line oder APPLITEC ECO-Line			



Wendepplattenhalter ER16 / SCLCL09
für Rückseitenbearbeitung mit IK (Kühlung)

Insert Holder ER16 / SCLCL09
for Backworking with IK (coolant)

Bestell-Nr.: WP-ER16-SCLCL09-OXOSWIK	(BIMU-Platte - insert)	für - for	SR38; SR32J11
order-no.: WP-ER16-SCLCL09-ECOSWIK	(APPLITEC-Platte - insert)		
Platte rechts - <i>insert right</i> : Gewindeplatte ER16 - <i>threading insert ER16</i>		Platte links - <i>insert left</i> : CC..09T3 - CC..09T3	
Einstichplatte stirnseitig (optional) - <i>cut-in insert frontal (optional)</i> : BIMU OxO-Line oder APPLITEC ECO-Line			



ER-Zangenspannfutter
 für STAR-Maschinen / Rückseitenbearbeitung

ER-Collet Holders
 for STAR-Machines / Backworking

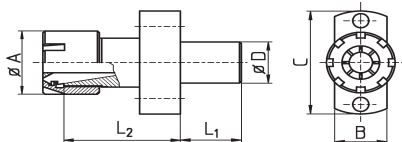


Bild 1

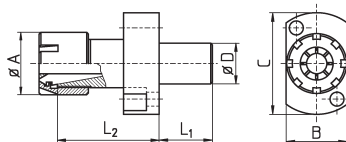


Bild 2

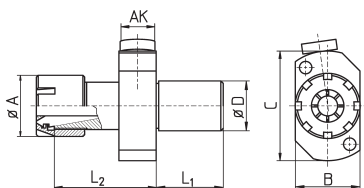


Bild 3

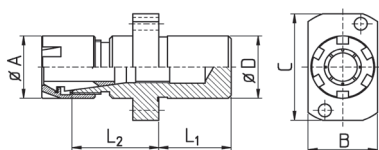


Bild 4

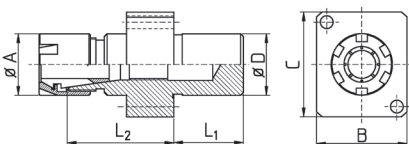


Bild 5

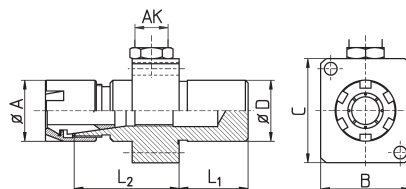


Bild 6

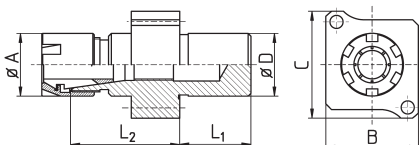


Bild 7

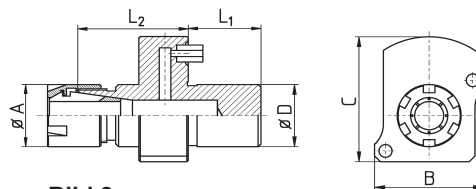


Bild 8

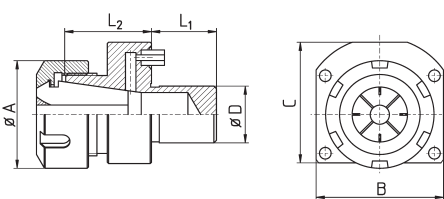


Bild 9

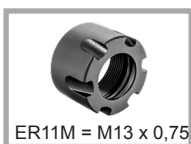
ER-Zangenspannfutter
für STAR-Maschinen / Rückseitenbearbeitung

ER-Collet Holders
for STAR-Machines / Backworking

Bestell-Nr. order-no.	Zange collet	D	L ₁	L ₂	A	B	C	AK	Bild picture	Mutter nut	Maschinen-Typ machine type
EM1116SRJK	ER11	16	10	17	16	17	41	--	1	ER11M	SR10J (Pos T21 + T23)
EM1116SRJ	ER11	16	10	41	16	17	41	--	1	ER11M	
EM1116SR	ER11	16	20	17	19	24	40	--	2	ER11M	SR16 ; SR20
EM1616SRMS	ER16	16	20	17	22	24	40	--	2	ER16M	
EM1616SROS*	ER16	16	20	17	22	24	40	--	2	ER16M	
EM1116SRR	ER11	16	10	16	16	17	41	--	2	ER11M	SR16R
EM1122SRR	ER11	22	25	47	16	28	49	--	2	ER11M	SR10J (Pos T22+ T24) ; SB12 / 20R ; SB16 / 20 ; SR20J / JN ; SR32J / JN ; SR20 R / II / III ; SV20R ; SW12RII ; ECAS12/20 SR20RIV (Pos T21 - T24 verbaut / overlaps T25 - T28)
EM1622SRR	ER16	22	25	30	22	28	49	--	2	ER16M	
EM1622SRR-L	ER16	22	25	45	22	28	49	--	2	ER16M	
EM1622SRR-AK1	ER16	22	25	31	22	28	49	G1/8"	3	ERC16M	
EM1622SRR-AK2	ER16	22	25	31	22	28	49	M8x1	3	ERC16M	
EM1622SRR-c	ER16	22	25	21	22	28	49	--	2	ER16M	
EM2022SRR	ER20	22	25	30	28	28	49	--	2	ER20M	
EM2022SRR-AK1	ER20	22	25	30	28	28	49	G1/8"	3	ERC20M	
EM2022SRR-AK2	ER20	22	25	30	28	28	49	M8x1	3	ERC20M	
EM1622SW	ER16	22	25	38	22	32,5	37,5	--	5	ER16M	
EM1622SW-OS*	ER16	22	25	40	22	32,5	37,5	--	5*	ER16M	
EM1622SW-AK1	ER16	22	25	38	22	32,5	37,5	G1/8"	6	ERC16M	
EM1622SW-AK2	ER16	22	25	38	22	32,5	37,5	M8x1	6	ERC16M	
EM1622SW2-OS*	ER16	22	25	40	22	32,5	37,5	--	7*	ER16M	
EM2022SW	ER20	22	25	32	28	32,5	37,5	--	5	ER20M	
EM2022SW-AK1	ER20	22	25	32	28	32,5	37,5	G1/8"	6	ERC20M	
EM2022SW2-OS*	ER20	22	25	27	28	32,5	37,5	--	7*	ER20M	
EM2022SW-AK1	ER20	22	25	32	28	32,5	37,5	G1/8"	6	ERC20M	
EM1622SWS	ER16	22	25	31	22	24	37,5	--	4	ER16M	SW20 (Pos T24 + T28)
EM2022SR	ER20	22	25	28	28	38	48	--	2	ER20M	SR32 ; SR32J
EM1622SWIK	ER16	22	25	35	22	37,5	44	--	8	ERC16M	SR38 ; SR32JII
EM2022SWIK	ER20	22	25	33	28	37,5	44	--	8	ERC20M	
EU2522SWIK	ER25	22	25	33	42	49	47	--	9	ERC25	

* Ohne Innengewinde für Stellschraube

* Without thread for backstop screw



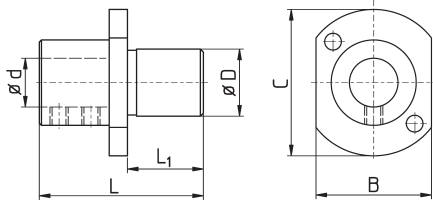
Bohrstangenaufnahmen für
Rückseitenbearbeitung STARBoring Bar Sleeves for
for STAR backworking

Bild 1

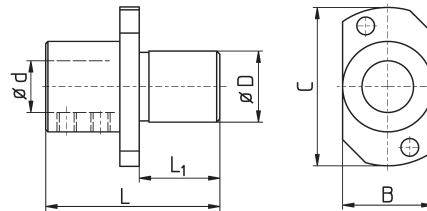


Bild 2



Bestell-Nr. order-no.	d	D	C	B	L ₁	L	Maschinen machines	Bild picture
WD0516SR	5	16	40	24	20	46	SR16 / 20	
WD0616SR	6	16	40	24	20	46		
WD0816SR	8	16	40	24	20	46		
WD1016SR	10	16	40	24	20	46		
WD1216SR	12	16	40	24	20	46		
WD0622SRR	6	22	49	28	25	59	SR10J (Position T22 + T24) SB16 / 20 Type C / Type E SB20R Type E / Type G / Type N SR20J / JN ; SW12RII SR20 R / II / III ; SV20R SR32J / JN SR20R IV (Pos. T21 - T24, verbaut - overlaps T25 - T28)	1
WD0722SRR	7	22	49	28	25	59		1
WD0822SRR	8	22	49	28	25	59		1
WD0922SRR	9	22	49	28	25	59		1
WD1022SRR	10	22	49	28	25	59		1
WD1222SRR	12	22	49	28	25	59		1
WD1422SRR	14	22	49	28	25	59		1
WD1622SRR	16	22	49	28	25	59		1
WD1922SRR	19	22	49	28	25	59		1
WD2022SRR	20	22	49	28	25	59		1
WD0622SR	6	22	48	38	25	63	SR32J / JN	2
WD0822SR	8	22	48	38	25	63		2
WD1022SR	10	22	48	38	25	63		2
WD1222SR	12	22	48	38	25	63		2
WD1422SR	14	22	48	38	25	63		2
WD1622SR	16	22	48	38	25	63		2
WD2022SR	20	22	48	38	25	63		2

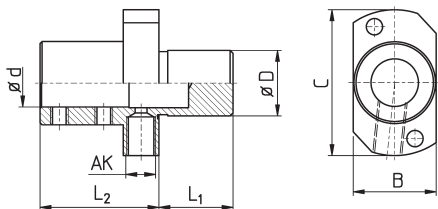
Bohrstangenaufnahmen
Rückseitenbearbeitung STAR
mit innerer KühlmittelzufuhrBoring Bar Sleeves
for STAR backworking
with inner coolant inlet

Bild 3

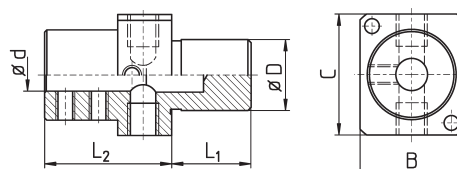


Bild 4

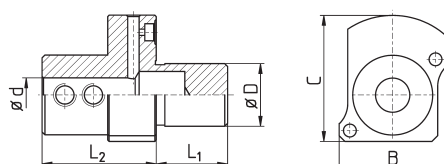


Bild 5



Bohrstangenaufnahmen
Rückseitenbearbeitung STAR
mit innerer KühlmittelzufuhrBoring Bar Sleeves
for STAR backworking
with inner coolant inlet

Bestell-Nr. order-no.	d	D	L ₁	L ₂	C	B	AK	Maschinen machines	Bild picture
WD2522SR-AK1	25	22	25	44	48	38	G1/8"	SR32	--
									3
WD0322SRR-AK1	3	22	25	40	49	28	G1/8"		3
WD0422SRR-AK1	4	22	25	40	49	28	G1/8"		3
WD0522SRR-AK1	5	22	25	40	49	28	G1/8"		3
WD0622SRR-AK1	6	22	25	40	49	28	G1/8"		3
WD0822SRR-AK1	8	22	25	40	49	28	G1/8"		3
WD1022SRR-AK1	10	22	25	40	49	28	G1/8"		3
WD1222SRR-AK1	12	22	25	40	49	28	G1/8"	SR10J (Position T22 + T24)	3
WD1422SRR-AK1	14	22	25	40	49	28	G1/8"	SB16 / 20 Type C / Type E	3
WD1622SRR-AK1	16	22	25	40	49	28	G1/8"	SB20R Type E / Type G / Type N	3
WD2022SRR-AK1	20	22	25	40	49	28	G1/8"	SR20J / JN ; SW12RII	3
								SR20 R / II / III ; SV20R	3
								SR32J / JN ; ECAS12/20	3
WD3122SRR-AK1	1/8"	22	25	40	49	28	G1/8"	SR20R IV (Pos. T21 - T24, verbaut - overlaps T25 - T28)	3
WD4722SRR-AK1	3/16"	22	25	40	49	28	G1/8"		3
WD6322SRR-AK1	1/4"	22	25	40	49	28	G1/8"		3
WD7922SRR-AK1	5/16"	22	25	40	49	28	G1/8"		3
WD9522SRR-AK1	3/8"	22	25	40	49	28	G1/8"		3
WD1322SRR-AK1	1/2"	22	25	40	49	28	G1/8"		3
WD5822SRR-AK1	5/8"	22	25	40	49	28	G1/8"		3
WD1922SRR-AK1	3/4"	22	25	40	49	28	G1/8"		3
WD0622SW-AK1	6	22	25	40	37,5	32,5	G1/8"		4
WD0822SW-AK1	8	22	25	40	37,5	32,5	G1/8"		4
WD1022SW-AK1	10	22	25	40	37,5	32,5	G1/8"		4
WD1222SW-AK1	12	22	25	40	37,5	32,5	G1/8"		4
WD1422SW-AK1	14	22	25	40	37,5	32,5	G1/8"		4
WD1622SW-AK1	16	22	25	40	37,5	32,5	G1/8"		4
WD2022SW-AK1	20	22	25	40	37,5	32,5	G1/8"		4
								SW12R II ; SW20	
								SV20R ; SR20R IV	
								SB12/20R ; SR38	
WD3122SW-AK1	1/8"	22	25	40	37,5	32,5	G1/8"		4
WD4722SW-AK1	3/16"	22	25	40	37,5	32,5	G1/8"		4
WD6322SW-AK1	1/4"	22	25	40	37,5	32,5	G1/8"		4
WD7922SW-AK1	5/16"	22	25	40	37,5	32,5	G1/8"		4
WD9522SW-AK1	3/8"	22	25	40	37,5	32,5	G1/8"		4
WD1322SW-AK1	1/2"	22	25	40	37,5	32,5	G1/8"		4
WD5822SW-AK1	5/8"	22	25	40	37,5	32,5	G1/8"		4
WD1922SW-AK1	3/4"	22	25	40	37,5	32,5	G1/8"		4
WD0422SWIK	4	22	25	40	44,2	31,5	Ø 6		5
WD0622SWIK	6	22	25	40	44,2	31,5	Ø 6		5
WD0822SWIK	8	22	25	40	44,2	31,5	Ø 6		5
WD1022SWIK	10	22	25	40	44,2	31,5	Ø 6	SR38	5
WD1222SWIK	12	22	25	40	44,2	31,5	Ø 6	SR32J-II	5
WD1622SWIK	16	22	25	40	44,2	31,5	Ø 6		5
WD2022SWIK	20	22	25	40	44,2	31,5	Ø 6		5

Gewindeschneidfutter ER11 / ER11M
ER16 / ER16M für STARTap Holders ER11 / ER11M
ER16 / ER16M for STAR

Bild 1

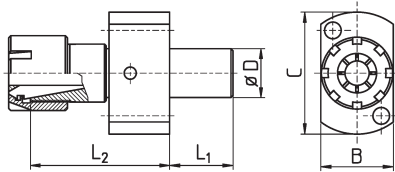


Bild 2

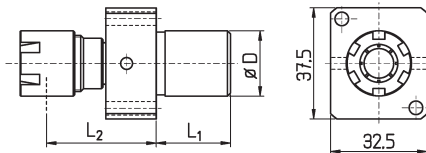


Bild 4

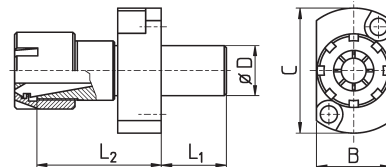


Bild 3

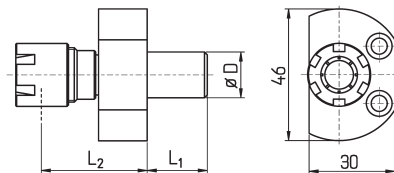
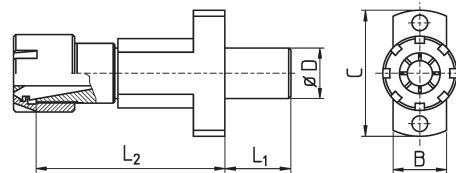


Bild 5



Bestell-Nr. order-no.	D	L ₁	L ₂	B	C	Bild picture	Mutter nut	Maschinen-Typ machine type
GFM111610SRJ	16	10	43	17	40	5	ER11M	SR10J (Pos T21 + T23)
GFU111610SRJ	16	10	43	17	40	5	UM/ER11	
GFM161610SRJ	16	10	53	17	40	5	ER16M	
GFU161610SRJ	16	10	53	17	40	5	UM/ER16	
GSM111621SR	16	21	24,5	24	40	4	ER11M	SR16 ; SR20
GSU111621SR	16	21	24,5	24	40	4	UM/ER11	
GSM161621SR	16	21	42	24	40	4	ER16M	
GSU161621SR	16	21	42	24	40	4	UM/ER16	
GSM161621RNC	16	21	45	30	46	3	ER16M	SR16
GSU161621RNC	16	21	45	30	46	3	UM/ER16	
GFM112225SRR	22	25	20,5	28	49	1	ER11M	SR10J (Pos T22+ T24) ; SB12 / 20R ; SB16 / 20 ; SR20J / JN ; SR32J / JN ; SR20 R / II / III ; SV20R ; SW12RII ; ECAS12/20 SR20RIV (Pos T21 - T24 verbaut / overlaps T25 - T28)
GFU112225SRR	22	25	29,5	28	49	1	UM/ER11	
GFM162225SRR	22	25	29,5	28	49	1	ER16M	
GFU162225SRR	22	25	29,5	28	49	1	UM/ER16	
GSM162225SRR	22	25	29,5	28	49	1	ER16M	
GSU162225SRR	22	25	29,5	28	49	1	UM/ER16	
GFM112225SW	22	25	27			2	ER11M	
GFU112225SW	22	25	36	32,5	37,5	2	UM/ER11	SW20 ; SW12RII ; SV20R ; SR20RIV ; SB12 / 20R ; SR38
GFM162225SW	22	25	36			2	ER16M	
GFU162225SW	22	25	36	32,5	37,5	2	UM/ER16	
GFM112225SR	22	25	19	38	48	1	ER11M	
GFU112225SR	22	25	28	38	48	1	UM/ER11	
GFM162225SR	22	25	28	38	48	1	ER16M	
GFU162225SR	22	25	28	38	48	1	UM/ER16	



Klemmbunde für Rückseitenbearbeitung

Clamping Flanges for Backworking

- Beidseitig geschliffen
- Exakte Befestigung der Werkzeuge direkt an der Maschine

- Grinded on both sides
- Exact fixing directly at the machine

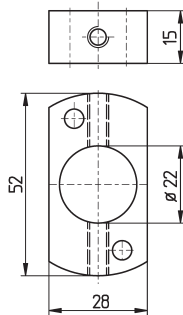


Bild 1

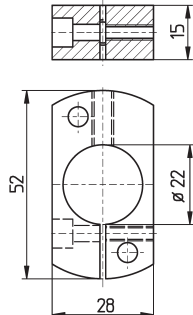


Bild 2

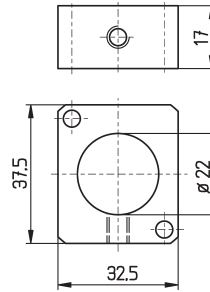


Bild 3

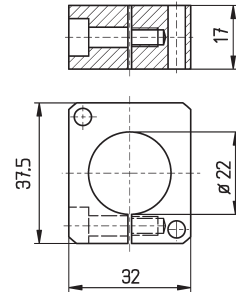
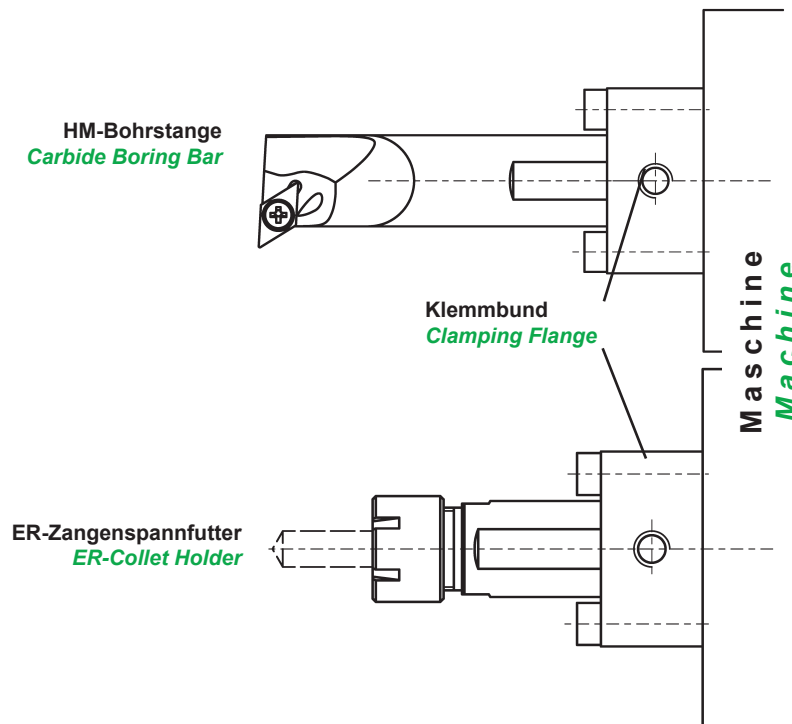


Bild 4

Bestell-Nr. order-no.	Bild	Maschine machine
STAR-KB1-22SRR	1	SR10J (Position T22 + T24); SB16 / 20 Type C / Type E; SB20R Type E / Type G / Type N; SR20J / JN; SW12RII; SR20 R / II / III; SV20R; SR32J / JN; SR20R IV (Pos. T21 - T24, verbaut - overlaps T25 - T28)
STAR-KB2-22SRR	2	
STAR-KB1-22SW	3	SW12R II; SW20; SV20R; SR20R IV
STAR-KB2-22SW	4	SB12/20R; SR38

Anwendungsbeispiele:
Samples of application:

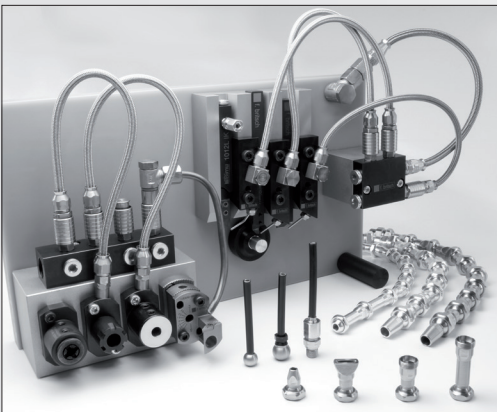




SPANNWERKZEUGE
CLAMPING TOOLS



HALTER FÜR SCHNEIDWERKZEUGE
TOOL HOLDERS



KÜHLMITTELSYSTEME
COOLANT SYSTEMS



BIMU-WENDEPLATTENSYSTEM
BIMU INSERTS



IFANGER MICROTURNT



SCHNEIDWERKZEUGE
CUTTING TOOLS



alles. immer. schnell.

werkzeuge | maschinen

Friedrich Britsch GmbH & Co. KG
Mülleracker 6
75177 Pforzheim

Tel: +49 7231 9365-0
Fax: +49 7231 9365-30
fbritsch@f-britsch.com

www.f-britsch.com
www.f-britsch.com/shop

