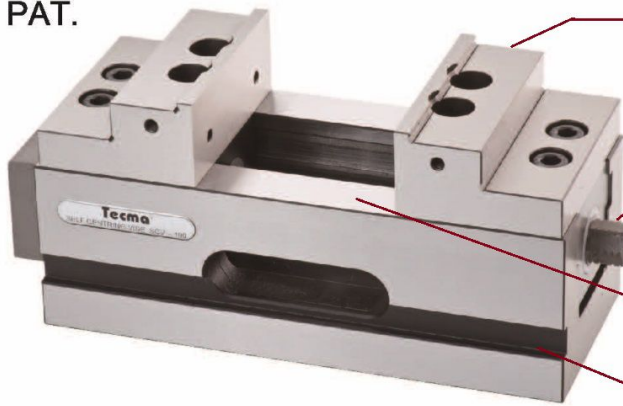


# 同動求心虎鉗使用說明

## Instruction for Self Centring Vise

PAT.



階梯鉗口(可180度反向使用)  
Step jaws (180°Reversible)

使用扭力扳手，中心重覆定位精度為0.01mm  
Using a torque wrench, the repeatability tolerance can be 0.01mm.

滑軌面經高週波熱處理HRC45°  
Slideways hardened to HRC45°.

機台固定槽(請自備固定螺絲及T型螺帽)  
Fixing Slot; T-Slot Nut and Screw should be provided by user.

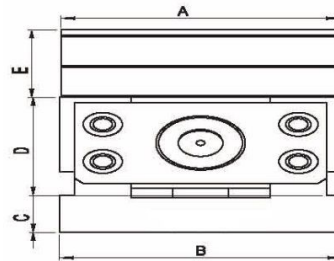
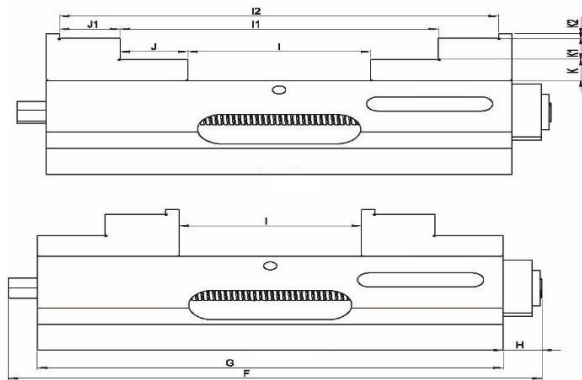
### 使用說明

▲虎鉗定期保養 請務必依據使用的情況，每隔一段時間進行保養(如1~2個月)，維護保養檢查步驟如下：

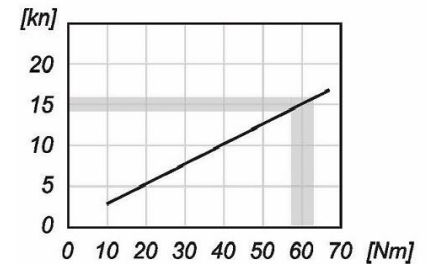
1. 檢查虎鉗底部平面，避免鐵屑或其他雜物刮傷。
2. 清潔滑溝及螺桿，螺桿塗上耐高壓油，所有零件在拆卸保養完成後，必需適當擦拭潤滑油再行組裝。
3. 清潔內外防塵片及週邊鐵屑。
4. 如長期不使用虎鉗，請確實清潔虎鉗內外鐵屑及噴塗防鏽油，以延長虎鉗的使用年限及精度。

▲ VISE MAINTENANCE Please plan to vise maintenance at an interval of one or two months according to usage condition.

1. Check on the bottom surface of vise and protect the vise bed from iron chips.
2. Clean up the vise bed and screwrod, apply high pressure oil to the screwrod. Please also apply the lubricating oil to all spare parts before refitting.
3. Clean out any iron chip in and around the dust cover.
4. If the vise will be laid up for a long time, please complete clean the vise up and apply anti-rust oil to the vise exactly in order to increase the lifespan and accuracy of vise.



夾持曲線圖  
(CLAMPING CURVE)



Unit/mm

MODEL	A	B	C	D	E	F	G	H	I	I1	I2	J	J1	K	K1	K2
SCV-60	59	60	18	60	25	143	120	13	0~50	38~85		17.5		12.5	12.5	
SCV-100	100	101	22	80	40	260	240	20	0~90	70~160	134~222	35	31	18	18	4
SCV-160	160	161	22	105	55	440	370	70	0~200	86~285		42.5		27.5	27.5	