

# HSK DIN 69893 - End Mill Holder WELDON - HSK A100 G6,3/15.000 rpm



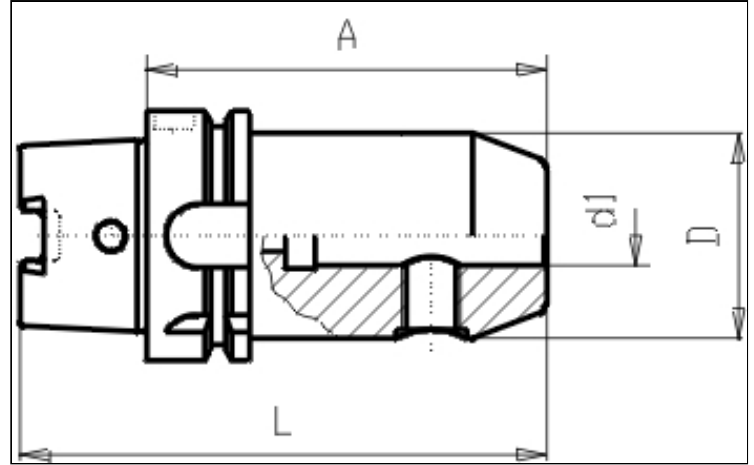
[https://www.kfh-hermann.de/shop/product\\_info.php?products\\_id=237&XTCsid=m817sb4bung771cb252be1rsc2](https://www.kfh-hermann.de/shop/product_info.php?products_id=237&XTCsid=m817sb4bung771cb252be1rsc2)

## Illustration



([https://www.kfh-hermann.de/shop/shop/images/product\\_images/original\\_images/bilder\\_B620.jpg?XTCsid=m817sb4bung771cb252be1rsc2](https://www.kfh-hermann.de/shop/shop/images/product_images/original_images/bilder_B620.jpg?XTCsid=m817sb4bung771cb252be1rsc2))

## Drawing



([https://www.kfh-hermann.de/shop/shop/images/product\\_images/original\\_images/skizzen\\_Z620mb.jpg?XTCsid=m817sb4bung771cb252be1rsc2](https://www.kfh-hermann.de/shop/shop/images/product_images/original_images/skizzen_Z620mb.jpg?XTCsid=m817sb4bung771cb252be1rsc2))

## Technical information

<b>Usage:</b>	For milling-tools with cylindrical shaft type Weldon DIN 1835 Form B. Suitable for central coolant flow
<b>Scope of delivery:</b>	with 1 clamping screw, from Dia 25mm with 2 screws
<b>Accuracy:</b>	Runout 15µm max. a 3 x d. Due to the eccentric grinding of the bores, the run-out can only be checked by inserting a qualified tool blank. Do NOT measure bore ! (see technical information)
<b>Customs tariff code:</b>	84 661 02 0
<b>Balanced:</b>	G6,3 15.000 rpm

## Variants

Product No.	HSK	d1	A	L	D	weight in kg	Stock 03.05, 08:24	Net-price
G620A 1 6x 80	A100	6	80	130	25	2,4	2	Please start an inquiry
G620A 1 6x160	A100	6	160	210	25	2,6	on inquiry	Please start an inquiry
G620A 1 8x 80	A100	8	80	130	28	2,4	2	Please start an inquiry
G620A 1 8x160	A100	8	160	210	28	2,8	on inquiry	Please start an inquiry
G620A 1 10x 80	A100	10	80	130	35	2,5	1	Please start an inquiry
G620A 1 10x160	A100	10	160	210	35	2,9	on inquiry	Please start an inquiry
G620A 1 12x 80	A100	12	80	130	42	2,8	3	Please start an inquiry

G620A 1 12x160	A100	12	160	210	42	3,1	on inquiry	<b>Please start an inquiry</b>
G620A 1 14x 80	A100	14	80	130	44	2,8	1	<b>Please start an inquiry</b>
G620A 1 16x100	A100	16	100	150	48	3	10	<b>Please start an inquiry</b>
G620A 1 16x160	A100	16	160	210	48	2,6	on inquiry	<b>Please start an inquiry</b>
G620A 1 18x100	A100	18	100	150	50	3	1	<b>Please start an inquiry</b>
G620A 1 20x100	A100	20	100	150	52	3,2	on inquiry	<b>Please start an inquiry</b>
G620A 1 20x160	A100	20	160	210	52	3,7	1	<b>Please start an inquiry</b>
G620A 1 25x100	A100	25	100	150	65	4,2	11	<b>Please start an inquiry</b>
G620A 1 25x160	A100	25	160	210	65	--	on inquiry	<b>Please start an inquiry</b>
G620A 1 32x100	A100	32	100	150	72	4,4	14	<b>Please start an inquiry</b>
G620A 1 40x105	A100	40	105	155	80	4,7	2	<b>Please start an inquiry</b>

Stock data from 2021-05-03 08:24:38

## Kontakt

KARL HERMANN GmbH | Varnbülerstrasse 10 - 12 | D - 71229 Leonberg | | Tel.: +49 (0)7152 / 93992-0 | Fax: +49 (0)7152 / 93992-4 | E-Mail: [verkauf@kfh-hermann.de](mailto:verkauf@kfh-hermann.de) | Internet: <http://www.kfh-hermann.de>

2021-05-06 21:32:15, [https://www.kfh-hermann.de/shop/product\\_info.php?products\\_id=237&XTCsid=m817sb4bung771cb252be1rsc2](https://www.kfh-hermann.de/shop/product_info.php?products_id=237&XTCsid=m817sb4bung771cb252be1rsc2)