

HSK DIN 69893 - Shrink Fit Holder - HSK A100

G2,5/20.000 rpm



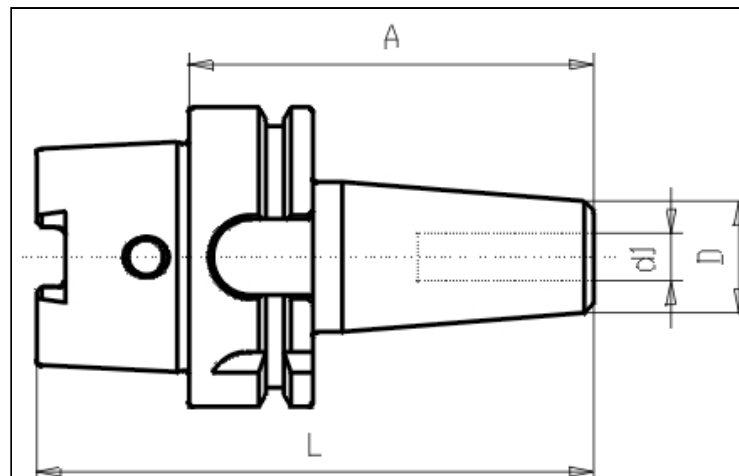
https://www.kfh-hermann.de/shop/product_info.php?products_id=242&XTCsid=m817sb4bung771cb252be1rsc2

Illustration



(https://www.kfh-hermann.de/shop/images/product_images/original_images/bilder_B628.jpg?XTCsid=m817sb4bung771cb252be1rsc2)

Drawing



(https://www.kfh-hermann.de/shop/images/product_images/original_images/skizzen_Z628mb.jpg?XTCsid=m817sb4bung771cb252be1rsc2)

Technical information

| | |
|-----------------------------|--|
| Usage: | For milling-tools with zylindrical shaft type Weldon DIN 1835 Form B. |
| Version: | Suitable for internal coolant flow Form AD/B = either central or over collar |
| Accuracy: | Max. runout 3 µm. |
| Customs tariff code: | 84 661 02 0 |
| Balanced: | G2,5 20.000 rpm |

Variants

| Product No. | HSK | d1 | A | L | D | weight in kg | Stock 03.05, 08:24 | Net-price |
|-----------------|------|----|-----|-----|----|--------------|-----------------------|-------------------------|
| G628A 1 x 6x 85 | A100 | 6 | 85 | 135 | 20 | 2,2 | on inquiry | Please start an inquiry |
| G628A 1 x 6x160 | A100 | 6 | 160 | 210 | 20 | 2,6 | on inquiry | Please start an inquiry |
| G628A 1 x 8x 85 | A100 | 8 | 85 | 135 | 20 | 2,2 | 4 | Please start an inquiry |
| G628A 1 x 8x160 | A100 | 8 | 160 | 210 | 20 | 2,6 | on inquiry | Please start an inquiry |
| G628A 1 x10x 90 | A100 | 10 | 90 | 140 | 24 | 2,3 | on inquiry | Please start an inquiry |
| G628A 1 x10x160 | A100 | 10 | 160 | 210 | 24 | 2,7 | 2 | Please start an inquiry |
| G628A 1 x12x 95 | A100 | 12 | 95 | 145 | 24 | 2,2 | on inquiry | Please start an inquiry |
| G628A 1 x12x160 | A100 | 12 | 160 | 210 | 24 | 2,7 | on inquiry | Please start an inquiry |

| | | | | | | | | |
|-----------------|------|----|-----|-----|----|-----|------------|--------------------------------|
| G628A 1 x14x 95 | A100 | 14 | 95 | 145 | 27 | 2,3 | on inquiry | Please start an inquiry |
| G628A 1 x14x160 | A100 | 14 | 160 | 210 | 27 | 2,7 | on inquiry | Please start an inquiry |
| G628A 1 x16x100 | A100 | 16 | 100 | 150 | 27 | 2,3 | on inquiry | Please start an inquiry |
| G628A 1 x16x160 | A100 | 16 | 160 | 210 | 27 | 2,9 | on inquiry | Please start an inquiry |
| G628A 1 x18x100 | A100 | 18 | 100 | 150 | 33 | 2,5 | 2 | Please start an inquiry |
| G628A 1 x18x160 | A100 | 18 | 160 | 210 | 33 | 3 | on inquiry | Please start an inquiry |
| G628A 1 x20x105 | A100 | 20 | 105 | 155 | 33 | 2,5 | 1 | Please start an inquiry |
| G628A 1 x20x160 | A100 | 20 | 160 | 210 | 33 | 3,4 | on inquiry | Please start an inquiry |
| G628A 1 x25x115 | A100 | 25 | 115 | 165 | 44 | 3,1 | 4 | Please start an inquiry |
| G628A 1 x25x160 | A100 | 25 | 160 | 210 | 44 | 3,6 | on inquiry | Please start an inquiry |
| G628A 1 x32x120 | A100 | 32 | 120 | 170 | 44 | -- | 5 | Please start an inquiry |
| G628A 1 x32x160 | A100 | 32 | 160 | 210 | 44 | -- | 2 | Please start an inquiry |

Stock data from 2021-05-03 08:24:38

Kontakt

KARL HERMANN GmbH | Varnbülerstrasse 10 - 12 | D - 71229 Leonberg | | Tel.: +49 (0)7152 / 93992-0 | Fax: +49 (0)7152 / 93992-4 | E-Mail: verkauf@kfh-hermann.de | Internet: <http://www.kfh-hermann.de>

2021-05-06 21:44:29, https://www.kfh-hermann.de/shop/product_info.php?products_id=242&XTCsid=m817sb4bung771cb252be1rsc2