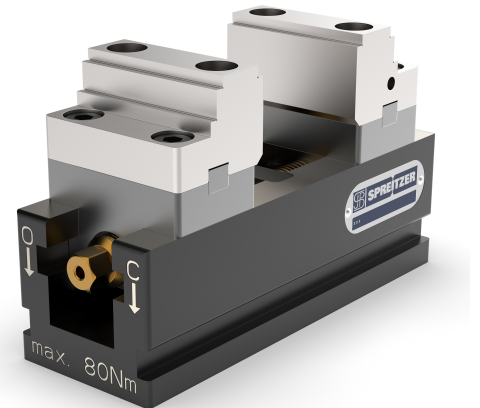


Mechanical centre-clamping vise MZU



Clamping with maximum accessibility and large span.

The centre-clamping vise series MZU with reversible top jaws gives the user the highest level of flexibility on multi-axis machining centres. The reversible stepped jaws with 3 ground clamping steps offer maximum accessibility, even for short cutting tools. Due to the variable stepped form of the reversible top jaws the complete clamping range can be covered.



Fields of application areas

- Single part / and small series production
- Clamping from outside to inside (external clamping)
- Clamping from the inside to the outside (internal clamping)

Scope of delivery

- 1 Centre-clamping vise with operating instructions
- 1 Pair hard reversible stepped jaws

Accessories

- Clamping jaws
- Center jaws
- General accessories

Note

- Mechanical compact vise with workpiece clamping against fixed stop.

Web

See below for more details and accessories

<https://produkte.spreitzer.de/en/clamping/self-centering-vises/mechanical-centric-vises/mechanical-centre-clamping-vise-mzu-203>.

Strong Points

- + Large clamping range using top reversible top jaws
- + Maximum flexibility
- + Maximum accessibility

Main application



Blank Clamping



Pallet Automation

Design

- Open, Optimized For Chip Evacuation

Material

Finish

- Tempered tool steel

- Surface hardened
- Functional surfaces precision grinded
- Hardened spindle
- Ground in base jaws

Accuracy

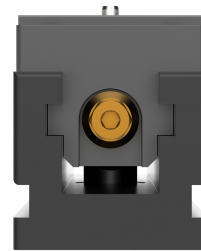
- Centering accuracy $\pm 0.015\text{mm}$
- Repetition accuracy $0,01\text{ mm}$
- Pairing accuracy $0,02\text{ mm}$

Practical advice

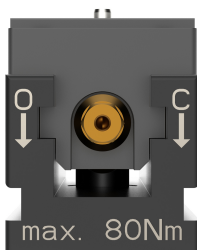
- The version with reinforced base jaws is used for assembling high/large top jaws.



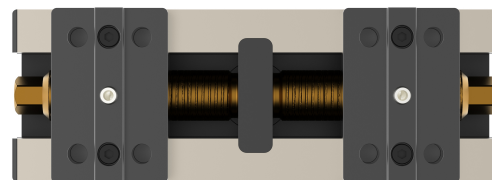
Mechanical centering vice MZU 170-60 front view



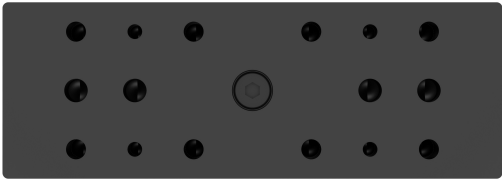
Mechanical centering vice MZU 170-60 from the right



Mechanical centering vice MZU 170-60 from the left



Mechanical centering vice MZU 170-60 from above

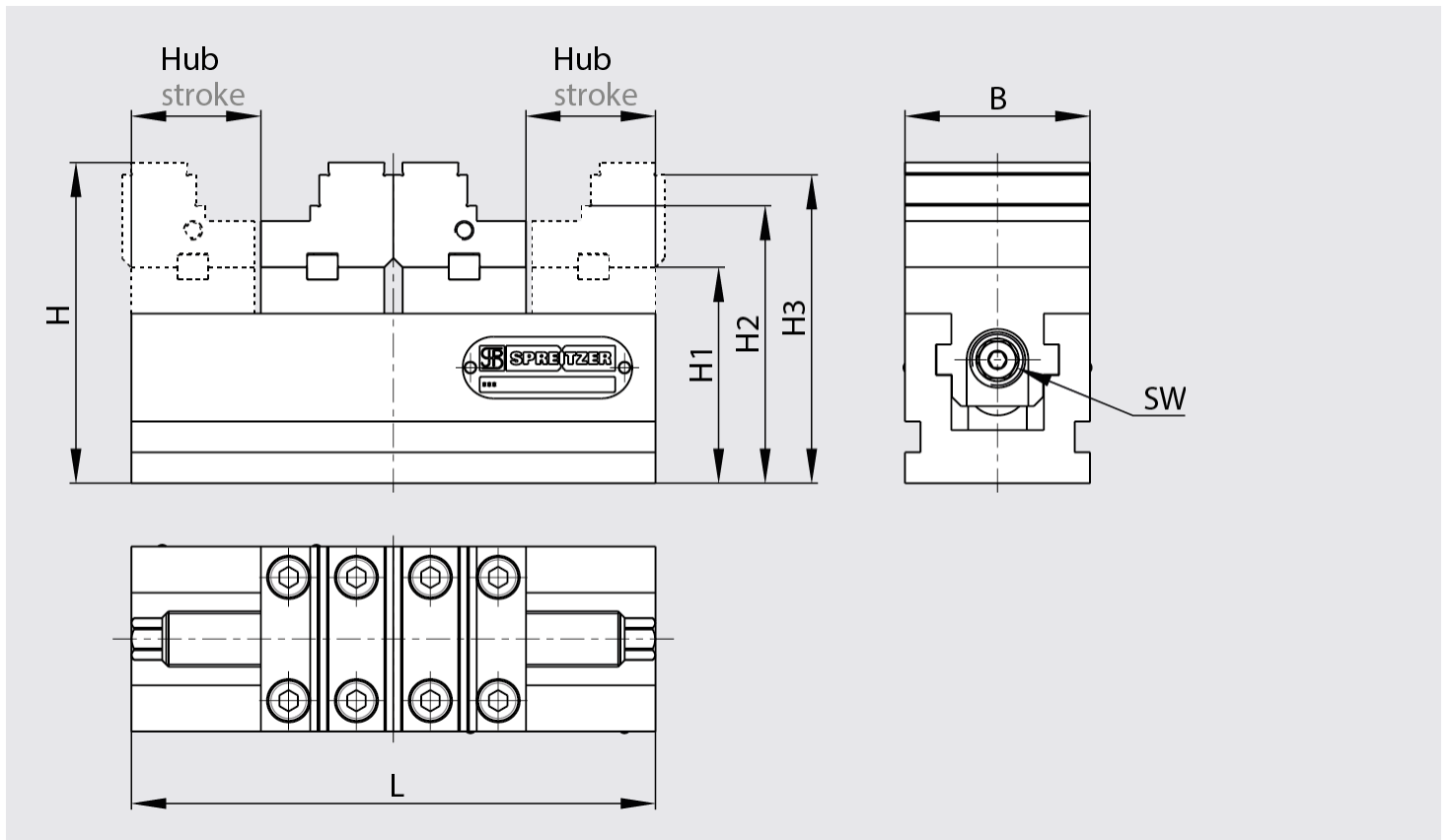


Mechanical centering vice MZU 170-60 from below

Finish	Order Number	L [mm]	B [mm]	H [mm]	H1 [mm]	H2 [mm]	H3 [mm]	Stroke [2xmm]	Clamping width [mm]	Clamping force [N]	M max [Nm]	SW [mm]	Weight [kg]
MZU 80-36 without reversible stepped jaws	B200500100	80	36	59	39	54	56	19	78/70	16000	30	8	1,0
MZU 120-36 without reversible stepped jaws	B200500181	120	36	59	39	54	56	39	118/110	16000	30	8	1,5
MZU 120-60 without reversible stepped jaws	B200500125	120	60	104	70	90	100	17	80/110	30000	80	12	3,5
MZU 150-80 without reversible stepped jaws	B200500183	150	80	115	75	100	111	29	112/140	40000	125	15	5,8
MZU 150-125 without reversible stepped jaws	B200500207	150	125	115	75	100	111	29	112/140	40000	125	15	7,0
MZU 170-60 without reversible stepped jaws	B200500066	170	60	104	70	90	100	42	130/160	30000	80	12	4,5
MZU 190-100 without reversible stepped jaws	B200500185	190	100	139	95	115	135	37	148/180	50000	140	15	11,0
MZU 220-60 without reversible stepped jaws	B200500204	220	60	104	70	90	100	67	180/210	30000	80	12	6,5
MZU 220-80 without reversible stepped jaws	B200500065	220	80	115	75	100	111	61	180/210	40000	125	15	8,5
MZU 220-125 without reversible stepped jaws	B200500195	220	125	115	75	100	111	61	180/210	40000	125	15	10,5
MZU 240-125 without reversible stepped jaws	B200500138	240	125	170	115	140	165	45	190/230	70000	200	18	27,0
MZU 280-100 without reversible stepped jaws	B200500064	280	100	139	95	115	135	78	240/270	50000	140	15	16,5
MZU 320-125 without reversible stepped jaws	B200500201	320	125	115	75	100	111	111	270/310	40000	125	15	19,5
MZU 360-125 without reversible stepped jaws	B200500068	360	125	170	115	140	165	105	310/350	70000	200	18	33,0
MZU 360-125-2 without reversible stepped jaws	B200500158	360	125	170	115	140	165	105	310/350	70000	200	18	37,0
MZU 500-125 without reversible stepped jaws	B200500134	500	125	170	115	140	165	175	450/490	70000	200	18	38,0
MZU 500-125-2 without reversible stepped jaws	B200500146	500	125	170	115	140	165	175	450/490	70000	200	18	42,0
MZU 80-36 with reversible stepped jaws	B200500101	80	36	59	39	54	56	19	78/70	16000	30	8	1,0
MZU 120-36 with reversible stepped jaws	B200500180	120	36	59	39	54	56	39	118/110	16000	30	8	1,5
MZU 120-60 with reversible stepped jaws	B200500124	120	60	104	70	90	100	17	80/110	30000	80	12	3,5
MZU 150-80 with reversible stepped jaws	B200500182	150	80	115	75	100	111	29	112/140	40000	125	15	5,8
MZU 150-125 with reversible stepped jaws	B200500206	150	125	115	75	100	111	29	112/140	40000	125	15	7,0
MZU 170-60 with reversible stepped jaws	B200500046	170	60	104	70	90	100	42	130/160	30000	80	12	4,5
MZU 190-100 with reversible stepped jaws	B200500184	190	100	139	95	115	135	37	148/180	50000	140	15	11,0
MZU 220-60 with reversible stepped jaws	B200500203	220	60	104	70	90	100	67	180/210	30000	80	12	6,5
MZU 220-80 with reversible stepped jaws	B200500063	220	80	115	75	100	111	61	180/210	40000	125	15	8,5
MZU 220-125 with reversible stepped jaws	B200500196	220	125	115	75	100	111	61	180/210	40000	125	15	10,5
MZU 240-125 with reversible stepped jaws	B200500137	240	125	170	115	140	165	45	190/230	70000	200	18	27,0
MZU 280-100 with reversible stepped jaws	B200500048	280	100	139	95	115	135	78	240/270	50000	140	15	16,5

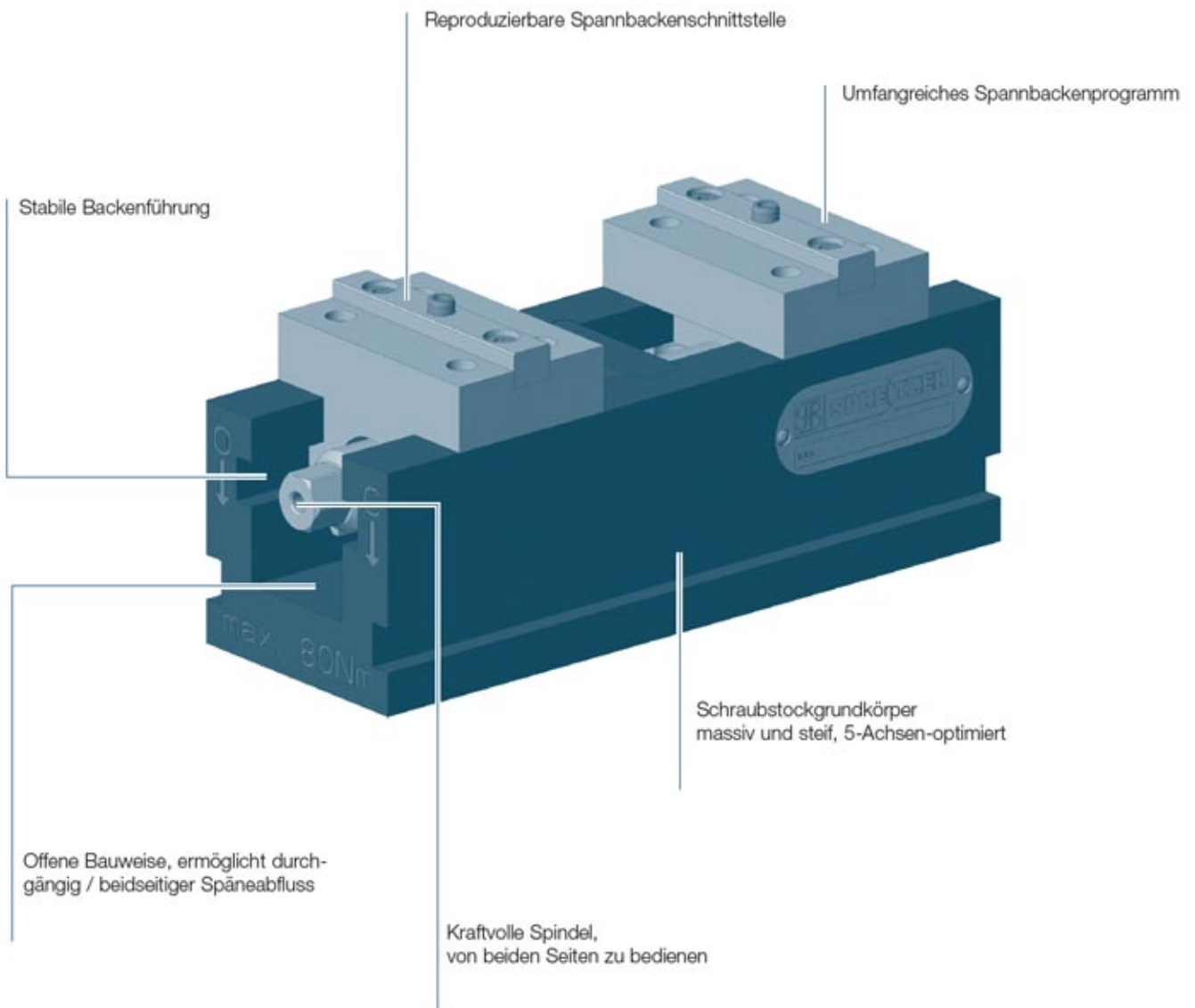
Finish	Order Number	L [mm]	B [mm]	H [mm]	H1 [mm]	H2 [mm]	H3 [mm]	Stroke [2xmm]	Clamping width [mm]	Clamping force [N]	M max [Nm]	SW [mm]	Weight [kg]
MZU 320-125 with reversible stepped jaws	B200500200	320	125	115	75	100	111	111	270/310	40000	125	15	19,5
MZU 360-125 with reversible stepped jaws	B200500050	360	125	170	115	140	165	105	310/350	70000	200	18	33,0
MZU 360-125-2 with reversible stepped jaws	B200500157	360	125	170	115	140	165	105	310/350	70000	200	18	37,0
MZU 500-125 with reversible stepped jaws	B200500133	500	125	170	115	140	165	175	450/490	70000	200	18	38,0
MZU 500-125-2 with reversible stepped jaws	B200500145	500	125	170	115	140	165	175	450/490	70000	200	18	42,0

Note: Your selected variants are marked in orange.



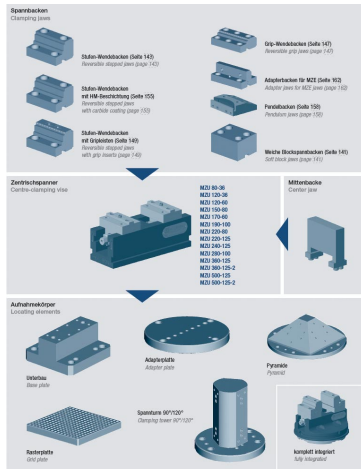
Dimensions of mechanical centering vice MZU

Special features



Description of mechanical centering vice MZU

Systemübersicht



System overview of mechanical centering vices MZU